

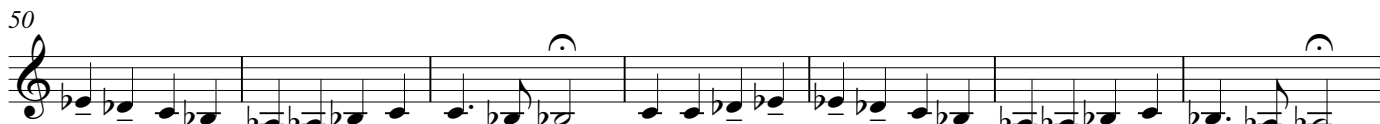
These warm up tunes are numbered 1 through 3. The idea is that the player who is playing efficiently should maintain production by playing matched numbers alternating every three days. Those who are not playing efficiently may supplement production tunes by playing all the Odes in succession. Tunes should be played on mouthpiece alone, then on The Buzz Clip and finally on the trumpet always with musicality and smooth airflow as the overall focuses. Always play each phrase with a full breath of air.

Allegro ♩ = 120

Odes to Joy

Beethoven / Di Claudio

C Major (1)



78 **D Major (3)**

Musical notation for D Major (3) in treble clef, starting at measure 78. The key signature has two sharps (F# and C#). The melody consists of eighth notes and quarter notes, with a repeat sign at the end of the first phrase.

85

Musical notation for D Major (3) in treble clef, starting at measure 85. The melody continues with eighth notes and quarter notes.

92 **E Flat Major (1)**

Musical notation for E Flat Major (1) in treble clef, starting at measure 92. The key signature has three flats (Bb, Eb, and Ab). The melody consists of eighth notes and quarter notes, with a repeat sign at the end of the first phrase.

99

Musical notation for E Flat Major (1) in treble clef, starting at measure 99. The melody continues with eighth notes and quarter notes.

106

Musical notation for E Flat Major (1) in treble clef, starting at measure 106. The melody continues with eighth notes and quarter notes.

113 **E Major (2)**

Musical notation for E Major (2) in treble clef, starting at measure 113. The key signature has one sharp (F#). The melody consists of quarter notes and eighth notes, with a repeat sign at the end of the first phrase.

120

Musical notation for E Major (2) in treble clef, starting at measure 120. The melody continues with quarter notes and eighth notes.

127 **F Major (3)**

Musical notation for F Major (3) in treble clef, starting at measure 127. The key signature has one flat (Bb). The melody consists of quarter notes and eighth notes, with a repeat sign at the end of the first phrase.

134

Musical notation for F Major (3) in treble clef, starting at measure 134. The melody continues with quarter notes and eighth notes.

141 **G Major (1)**

Musical notation for G Major (1) in treble clef, starting at measure 141. The key signature has no sharps or flats. The melody consists of quarter notes and eighth notes, with a repeat sign at the end of the first phrase.

148

Musical notation for G Major (1) in treble clef, starting at measure 148. The melody continues with quarter notes and eighth notes.

155

Musical notation for G Major (1) in treble clef, starting at measure 155. The melody continues with quarter notes and eighth notes, ending with a double bar line.